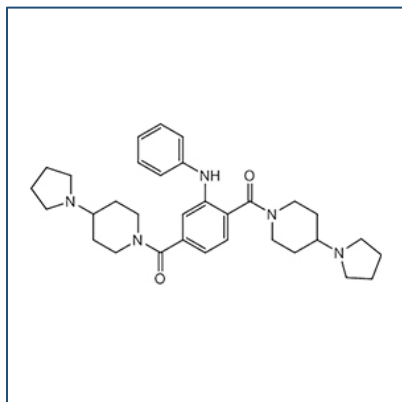


# Chemical Probe Reagent Authentication Certificate



[The Chemical Probes Portal](#) endorses **UNC1215** for use as a chemical probe in cells.

## UNC1215



**Protein target name:** L3MBTL3

**Target class:** Epigenetics/Malignant brain tumor Reader

**SMILES string:** C1CCN(C1)C2CCN(CC2)C(=O)C3=CC(=C(C=C3)C(=O)N4CCC(CC4)N5CCCC5)NC6=CC=CC=C6

**InChi Key:** PQOOIERVZAXHBP-UHFFFAOYSA-N

**Control compound:** UNC1079

## Recommendations for use

Recommended Concentration for use in cells: 100 nM - 1 uM

This probe is not recommended for use in animal models.