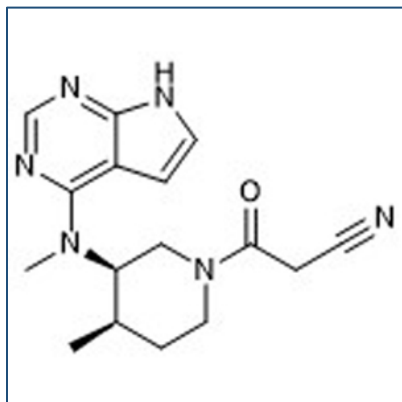


# Chemical Probe Reagent Authentication Certificate



[The Chemical Probes Portal](#) endorses **Tofacitinib** for use as a chemical probe in cells.

## Tofacitinib



**Protein target name:** JAK1, JAK2, JAK3

**Target class:** Protein kinase/Tyrosine Kinase

**SMILES string:** C[C@@H]1CCN(C[C@@H]1N(C)C2=NC=NC3=C2C=CN3)C(=O)CC#N

**InChi Key:** UJLAWZDWDVHWOW-YPMHNXCESA-N

**Control compound:** N/A

## Recommendations for use

Recommended Concentration for use in cells: Up to 120 nM

This probe is not recommended for use in animal models.