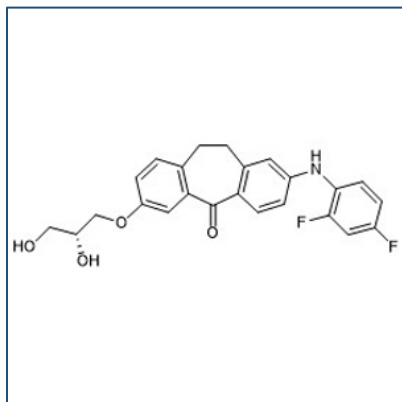


# Chemical Probe Reagent Authentication Certificate



[The Chemical Probes Portal](#) endorses **Skepinone-L** for use as a chemical probe in cells.

## Skepinone-L



**Protein target name:** MAPK14 (p8)

**Target class:** Protein kinase

**SMILES string:** C1CC2=C(C=CC(=C2)NC3=C(C=C(C=C3)F)F)C(=O)C4=C1C=CC(=C4)OC[C@@H](CO)O

**InChi Key:** HXMGCTFLLWPVFM-GOSISDBHSA-N

**Control compound:** N/A

## Recommendations for use

Recommended Concentration for use in cells: 100-400 nM

This probe is also endorsed for use in mice.