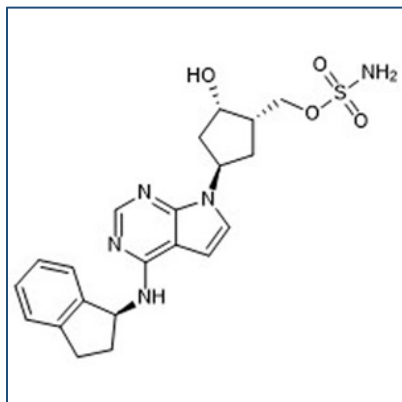


Chemical Probe Reagent Authentication Certificate



[The Chemical Probes Portal](#) endorses **Pevonedistat** for use as a chemical probe in cells.

Pevonedistat



Protein target name: NEDD8-activating enzyme

Target class: Other post-translational modification/Ubiquitin like modifier activating enzymes

SMILES string: C1CC2=CC=CC=C2C1NC3=NC=NC4=C3C=CN4C5CC(C(C5)O)COS(=O)(=O)N

InChi Key: MPUQHZXIXSTTDU-QXGSTGNESA-N

Control compound: N/A

Recommendations for use

Recommended Concentration for use in cells: 0.3 uM

This probe is not recommended for use in animal models.