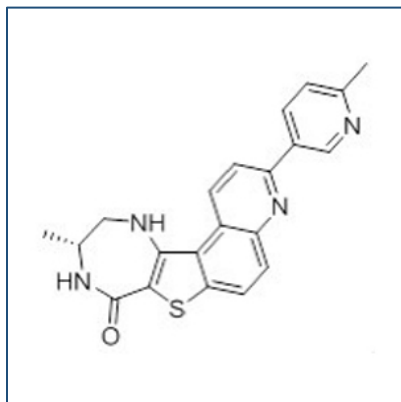


Chemical Probe Reagent Authentication Certificate



[The Chemical Probes Portal](#) endorses **PF3644022** for use as a chemical probe in cells.

PF3644022



Protein target name: MAPKAPK2 (MK2)

Target class: Protein kinase/CAMK

SMILES string: C[C@@H]1CNC2=C(C(=O)N1)SC3=C2C4=C(C=C3)N=C(C=C4)C5=CN=C(C=C5)C

InChi Key: CMWRPDHVGMHLSZ-GFCCVEGCSA-N

Control compound: N/A

Recommendations for use

Recommended Concentration for use in cells: 200-900 nM

This probe is not recommended for use in animal models.