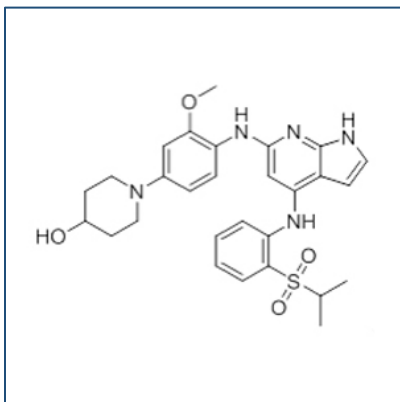


# Chemical Probe Reagent Authentication Certificate



[The Chemical Probes Portal](#) endorses **MPS1-IN-1** for use as a chemical probe in cells.

## MPS1-IN-1



**Protein target name:** MPS1

**Target class:** Protein kinase/Other

**SMILES string:**

CC(C)S(=O)(=O)C1=CC=CC=C1NC2=CC(=NC3=C2C=CN3)NC4=C(C=C(C=C4)N5CCC(CC5)O)OC

**InChi Key:** NMJMRSQTDLRCRQ-UHFFFAOYSA-N

**Control compound:** N/A

## Recommendations for use

Recommended Concentration for use in cells: 1-10  $\mu$ M

This probe is not recommended for use in animal models.