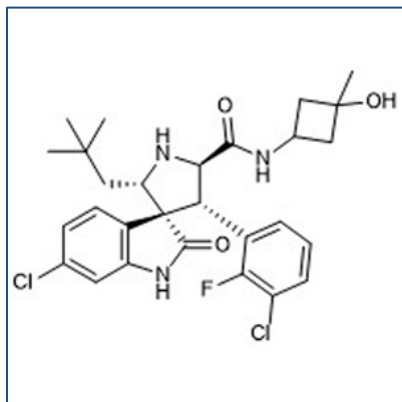


Chemical Probe Reagent Authentication Certificate



[The Chemical Probes Portal](#) endorses **MI-888** for use as a chemical probe in cells.

MI-888



Protein target name: MDM2

Target class: Other post-translational modification/E3 ubiquitin ligase

SMILES string:

```
CC1(CC(C1)NC(=O)[C@H]2[C@@H]([C@]3([C@@H](N2)CC(C)(C)C)C4=C(C=C(C=C4)Cl)NC3=O)C5=C(C(=CC=C5)Cl)F)O
```

InChi Key: MZBOZBMARIQZGX-VVWWDXNASA-N

Control compound: N/A

Recommendations for use

Recommended Concentration for use in cells: 1-100 nM

This probe is also endorsed for use in mice.