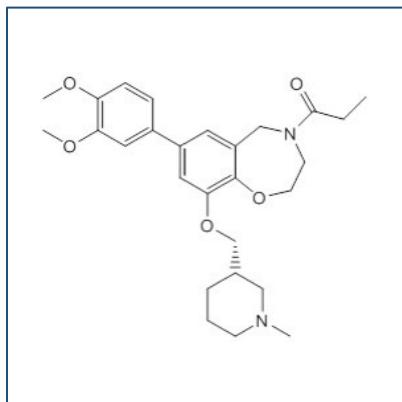


Chemical Probe Reagent Authentication Certificate



[The Chemical Probes Portal](#) endorses **I-CBP112** for use as a chemical probe in cells.

I-CBP112



Protein target name: CREBBP, EP300

Target class: Epigenetics/Bromodomain

SMILES string: CCC(=O)N1CCOC2=C(C1)C=C(C=C2OC[C@H]3CCCN(C3)C)C4=CC(=C(C=C4)OC)OC

InChi Key: YKNAKDFZAWQEEO-IBGZPJMESA-N

Control compound: N/A

Recommendations for use

Recommended Concentration for use in cells: Up to 1 μ M

This probe is not recommended for use in animal models.