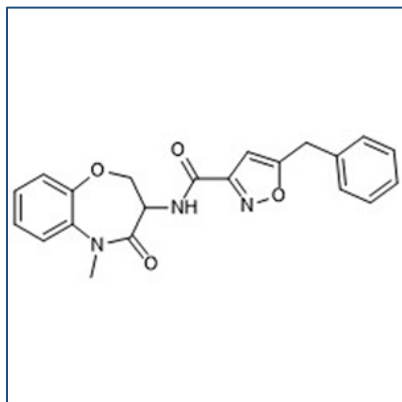


# Chemical Probe Reagent Authentication Certificate



[The Chemical Probes Portal](#) endorses **GSK481** for use as a chemical probe in cells.

## GSK481



**Protein target name:** RIPK1

**Target class:** Protein kinase/TKL

**SMILES string:** CN1C2=CC=CC=C2OC[C@@H](C1=O)NC(=O)C3=NOC(=C3)CC4=CC=CC=C4

**InChi Key:** KNOUWGGQMADIBV-KRWDZBQOSA-N

**Control compound:** 5-benzyl-N-[(3R)-5-methyl-4-oxo-2,3-dihydro-1,5-benzoxazepin-3-yl]-1,2-oxazole-3-carboxamide

## Recommendations for use

Recommended Concentration for use in cells: 10-100 nM

This probe is not recommended for use in animal models.