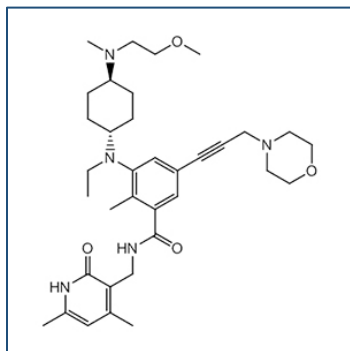


# Chemical Probe Reagent Authentication Certificate



[The Chemical Probes Portal](#) endorses **EPZ011989** for use as a chemical probe in cells.

## EPZ011989



**Protein target name:** EZH1, EZH2

**Target class:** Epigenetics/Protein methyltransferase

**SMILES string:**

CCN(C1CCC(CC1)N(C)CCOC)C2=CC(=CC(=C2C)C(=O)NCC3=C(C=C(NC3=O)C)C)C#CCN4CCOCC4

**InChi Key:** XQFINGFCBFHOPE-UHFFFAOYSA-N

**Control compound:** N/A

## Recommendations for use

Recommended Concentration for use in cells: 100-600 nM

This probe is also endorsed for use in mice.