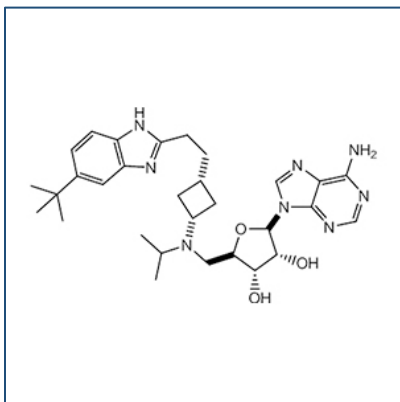


# Chemical Probe Reagent Authentication Certificate



[The Chemical Probes Portal](#) endorses **EPZ-5676** for use as a chemical probe in cells.

## EPZ-5676



**Protein target name:** DOT1L

**Target class:** Epigenetics/Protein methyltransferase

**SMILES string:**

```
CC(C)N(C[C@@H]1[C@H]([C@H]([C@@H](O1)N2C=NC3=C2N=CN=C3N)O)O)C4CC(C4)CCC5=NC6=C(N5)C=C(C=C6)C(C)(C)C
```

**InChi Key:** LXFOLMYKSYSZQS-XKHGBIBOSA-N

**Control compound:** N/A

## Recommendations for use

Recommended Concentration for use in cells: Up to 100 nM

This probe is also endorsed for use in mice.