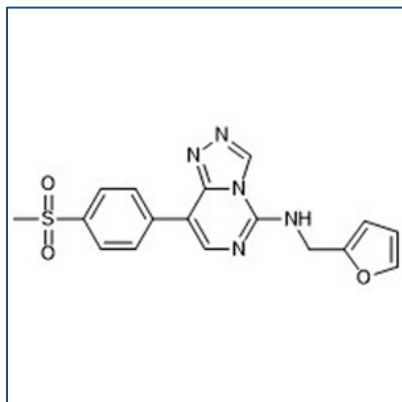


Chemical Probe Reagent Authentication Certificate



[The Chemical Probes Portal](#) endorses **EED226** for use as a chemical probe in cells.

EED226



Protein target name: EED

Target class: Epigenetics/Polycomb family

SMILES string: CS(=O)(=O)C1=CC=C(C=C1)C2=CN=C(N3C2=NN=C3)NCC4=CC=CO4

InChi Key: DYIRSNMPIZZNBK-UHFFFAOYSA-N

Control compound: N/A

Recommendations for use

Recommended Concentration for use in cells: 100 nM - 1 μ M

This probe is not recommended for use in animal models.