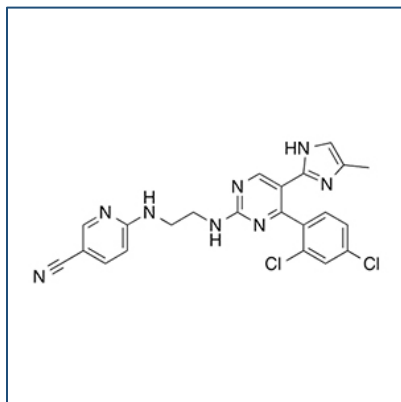


# Chemical Probe Reagent Authentication Certificate



[The Chemical Probes Portal](#) endorses **CHIR-99021** for use as a chemical probe in cells.

## CHIR-99021



**Protein target name:** GSK3A, GSK3B

**Target class:** Protein kinase/CMGC

**SMILES string:** CC1=CN=C(N1)C2=CN=C(N=C2C3=C(C=C(C=C3)Cl)Cl)NCCNC4=NC=C(C=C4)C#N

**InChi Key:** AQGNHMOJWBZFQQ-UHFFFAOYSA-N

**Control compound:** N/A

## Recommendations for use

Recommended Concentration for use in cells: 10 nM - 1  $\mu$ M

This probe is also endorsed for use in mice.