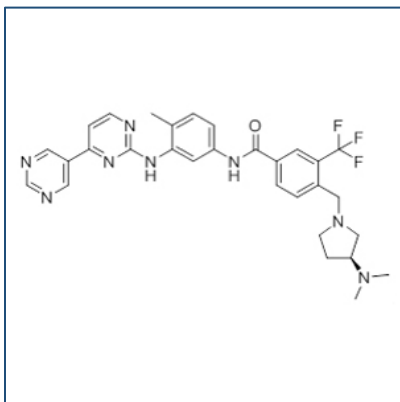


# Chemical Probe Reagent Authentication Certificate



[The Chemical Probes Portal](#) endorses **Bafetinib** for use as a chemical probe in cells.

## Bafetinib



**Protein target name:** BCR-ABL, LYN

**Target class:** Protein kinase/Tyrosine Kinase

**SMILES string:**

```
CC1=C(C=C(C=C1)NC(=O)C2=CC(=C(C=C2)CN3CC[C@@H](C3)N(C)C)C(F)(F)F)NC4=NC=C(C=N4)C5=CN=CN=C5
```

**InChi Key:** ZOPBZHLJXQAQON-VWLOTQADSA-N

**Control compound:** N/A

## Recommendations for use

Recommended Concentration for use in cells: 10 nM - 1 uM

This probe is also endorsed for use in mice.