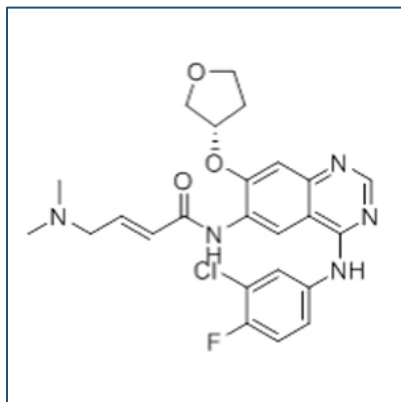


Chemical Probe Reagent Authentication Certificate



[The Chemical Probes Portal](#) endorses **Afatinib** for use as a chemical probe in cells.

Afatinib



Protein target name: EGFR, ERBB2

Target class: Protein kinase/Tyrosine Kinase

SMILES string: CN(C)C/C=C/C(=O)NC1=C(C=C2C(=C1)C(=NC=N2)NC3=CC(=C(C=C3)F)Cl)O[C@H]4CCOC4

InChi Key: ULXXDDBFHOBEGA-CWDCEQMOSA-N

Control compound: N/A

Recommendations for use

Recommended Concentration for use in cells: Up to 100 nM

This probe is also endorsed for use in mice.