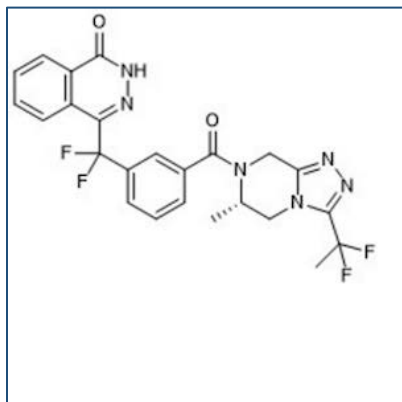


Chemical Probe Reagent Authentication Certificate



[The Chemical Probes Portal](#) endorses **AZ0108** for use as a chemical probe in cells.

AZ0108



Protein target name: PARP1, PARP2, PARP6

Target class: Other post-translational modification/PARP

SMILES string:

O=C1NN=C(C2=CC=CC=C2)C(F)(F)C3=CC=CC(C(N4[C@@H](C)CN5C(C4)=NN=C5C(F)(F)C)=O)=C3

InChi Key: N/A

Control compound: N/A

Recommendations for use

Recommended Concentration for use in cells: 100 nM - 1 μ M

This probe is not recommended for use in animal models.