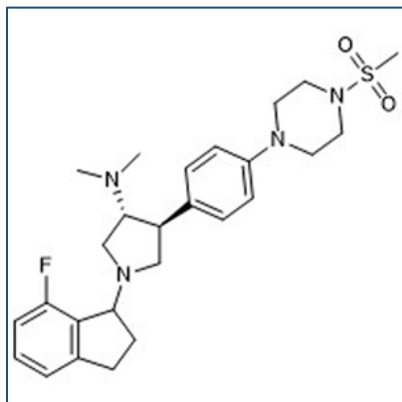


## Chemical Probe Reagent Authentication Certificate



[The Chemical Probes Portal](#) endorses **A-395** for use as a chemical probe in cells.

### A-395



**Protein target name:** EED

**Target class:** Epigenetics/Polycomb family

**SMILES string:**

CN(C)[C@H]1CN(C2CCC3=C2C(F)=CC=C3)C[C@@H]1C4=CC=C(N5CCN(CC5)S(=O)(C)=O)C=C4

**InChi Key:** REVJNSVNICWODC-KIDMSAQOSA-N

**Control compound:** A-395N

### Recommendations for use

Recommended Concentration for use in cells: 100-300 nM

This probe is not recommended for use in animal models.